

Kingsgate

DUNEDIN



Let's Meet *Together*
2024 Conference Pack



Welcome to Dunedin

As New Zealand's oldest city and a university town, Dunedin wears its Scottish heritage with pride. It possesses a unique combination of cultural riches, fine architecture and world-famous wildlife reserves on the Otago Peninsula. Often referred to as the eco-capital of New Zealand, on Dunedin's doorstep you will find incredible wildlife including the world's rarest penguins and at Taiaroa Head, the world's only mainland breeding colony of Royal Albatross.

Daily flights from the major cities into Dunedin make this an easily accessible destination for your next conference or meeting.

Location

Situated right in the heart of the city, Kingsgate Hotel Dunedin is within strolling distance of stately homes, Gothic revival style buildings and the CBD. The Otago Museum is a 15 minute walk away, the beach ten minutes' drive and with the Dunedin airport only 30 minutes' drive away, the hotel is perfectly located to easily access the major attractions and activities.





The Hotel

Enjoying a commanding position with superb views over the city, Kingsgate Hotel Dunedin offers a total dedication to excellence in guest service, modern comfort and attention to detail.

Kingsgate Hotel Dunedin is endorsed with a Qualmark 3 Plus Star and Enviro Silver rating establishing the hotel as a premier environmentally aware accommodation provider.

Guest Services

- Jimmy Cook's Kiwi Kitchen
- Aberdeen Bar
- Complimentary wireless internet throughout the hotel
- Complimentary car parking
- Guest laundry and dry cleaning services
- Photocopy and secretarial services



Function Rooms

Kingsgate Hotel Dunedin offers optimum flexibility in terms of style, seating arrangements and presentation facilities. Our dedicated conference team will work closely with you to deliver a seamless event that is a resounding success.

Edinburgh Room

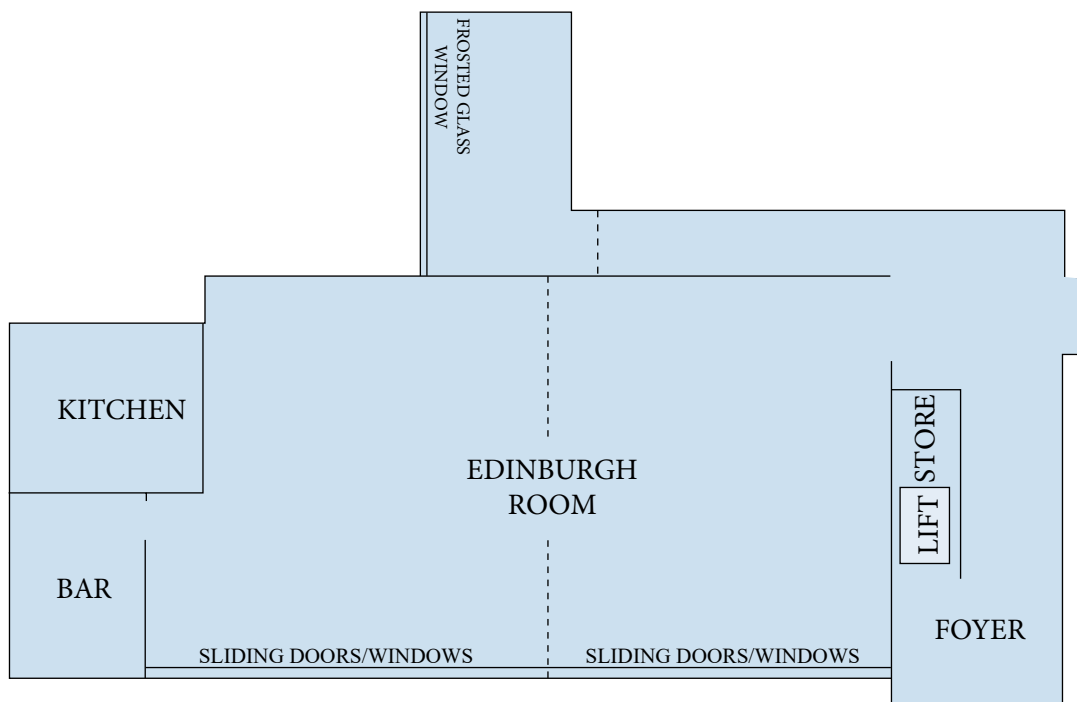
Located on level 1, the Edinburgh Room is 120m², catering for up to 90 theatre style or 80 banquet style. Ideal for seminars, training or product launches floor to ceiling windows provide ample natural light.





Capacities

Conference Room	Area Sqm	Ceiling Height							
Edinburgh Room	120	2.40m	90	35	80	120	25	20	35





Event Essentials

Day Delegate Packages

Full Day Delegate Package
 NZ \$65.00 per person per day includes:

Plenary venue hire

Morning tea

Working lunch

Afternoon tea

Whiteboard with markers

Flipchart with markers

Notepads, pens, iced water and mints

Delegate packages are available for booking of 18 delegates or more and are inclusive of 15% GST.

Audiovisual Equipment

Equipment	Cost per day	Equipment	Cost per day
First whiteboard	Complimentary	Data projector	NZ \$150.00
First flipchart*	Complimentary	Electronic whiteboard	POA
Lectern*	Complimentary	Sound system with microphone	From NZ \$250.00

All the above pricing is inclusive of 15% GST unless otherwise stated and are subject to change.

*External hire and delivery fees may apply.

We work closely with a local audiovisual supplier and can arrange additional equipment based on your specific requirements.

Internet

Complimentary wifi is available in the conference room.



Food & Beverage

Catering

When planning your catering, we offer several different solutions and can tailor menus to suit dietary requirements and your budget. Refreshments can be served in the conference room or in a breakout area, depending on your needs.

Arrival tea and coffee	NZ \$5.00
Morning or afternoon tea	From NZ \$10.00
Lunch	From NZ \$30.00
Canapés	From NZ \$30.00

All prices are per person and include 15% GST.

Jimmy Cook's Kiwi Kitchen

Drawing inspiration from the renowned 18th century English explorer Captain James Cook whose grasp of nutrition was ahead of his time. Jimmy Cook's Kiwi Kitchen is open every day for breakfast, serving traditional kiwi fare that is fresh and appetising.





Accommodation

Kingsgate Hotel Dunedin has 55 beautifully appointed north facing guest rooms, including 45 standard room and 10 junior suites, each with individual balconies providing fantastic views of the city and surrounding rural districts.

Standard Room

Relax in a comfortable, bright and spacious room with a balcony offering beautiful views of the city and surrounding rural districts. Standard rooms have either one or two queen beds depending on double or twin configuration.

Junior Suite

Located on the top two floors of the hotel, junior suites enjoy exquisite views. All suites feature a queen bed, ensuite bathroom and separate lounge area extending onto a large private balcony.

All rooms feature

Television with 70 Sky and free-to-air channels, Wi-Fi internet access, table, refrigerator, tea and coffee facilities, direct dial telephone, ironing facilities and a hair dryer.

Check-in: 2.00pm

Check-out: 10.00am



Event Legacy

Do you like the idea of your event leaving a legacy? Knowing that your event can contribute to meaningful change in both the community and environment? Millennium Hotels and Resorts have partnered with Save the Kiwi, to give you the opportunity to help protect our national icon, while integrating manaaki (care and hospitality) into your next conference.

Save the Kiwi

Every little bit counts towards creating a sustainable future and that's why we're offering a unique way for you to contribute towards providing a meal for our national icon; the kiwi.

Choosing not to have your room serviced during an event helps us to conserve water and energy resources that will be redirected towards helping provide kiwi chicks a safe place to sleep and grow until they reach the all-important 'stoat-proof' weight of 1kg.

For every five rooms that are not fully serviced, we will donate one bed for a kiwi at the Save the Kiwi crèche in Napier on behalf of your organisation.





Activities & Attractions

From team building to partner and touring programs, our expert conference team will enhance your whole meeting experience with our innovative ideas and impeccable service tailored to suit your group and budget.

Dunedin values its history with fine examples of working heritage like the original Speight's Brewery, the Gasworks Museum and the Taieri Gorge Railway. Soaring cathedral spires, a magnificent Flemish-style railway station, nineteenth century Larnach Castle, Olveston Historic House, heritage university buildings and a neo-gothic convent are among the city's architectural treasures. Take a stroll around New Zealand's oldest Botanic Gardens, established in 1863, visit the Dunedin Public Art Gallery, Toitu Otago Settlers Museum and the Otago Museum or visit the Chinese Garden, a perfect miniature of a traditional Chinese landscape painting.

The Otago Peninsula, which lies within the city boundaries, is internationally renowned for wildlife reserves including the rare Royal Albatross breeding ground and Yellow-Eyed and Little Blue Penguin colonies. Dunedin has some fabulous beaches along its coastline all within easy reach of the city and there are many walking tracks around the city that are suitable for all ages and degrees of fitness.





Contact Us

Kingsgate Hotel Dunedin

10 Smith Street
Dunedin New Zealand 9016

Restaurant and Conference Manager: Leangela Aiono
Telephone: +64 3 477 6784
Email: dunedin.reservations@millenniumhotels.co.nz

Millennium Hotels and Resorts National New Zealand Sales Office

Toll Free within New Zealand: 0800 4 MEETINGS (0800 4 633 846)
Telephone: +64 3 367 3302
Email: meetings@millenniumhotels.co.nz



www.meetingsnz.co.nz

Our Locations

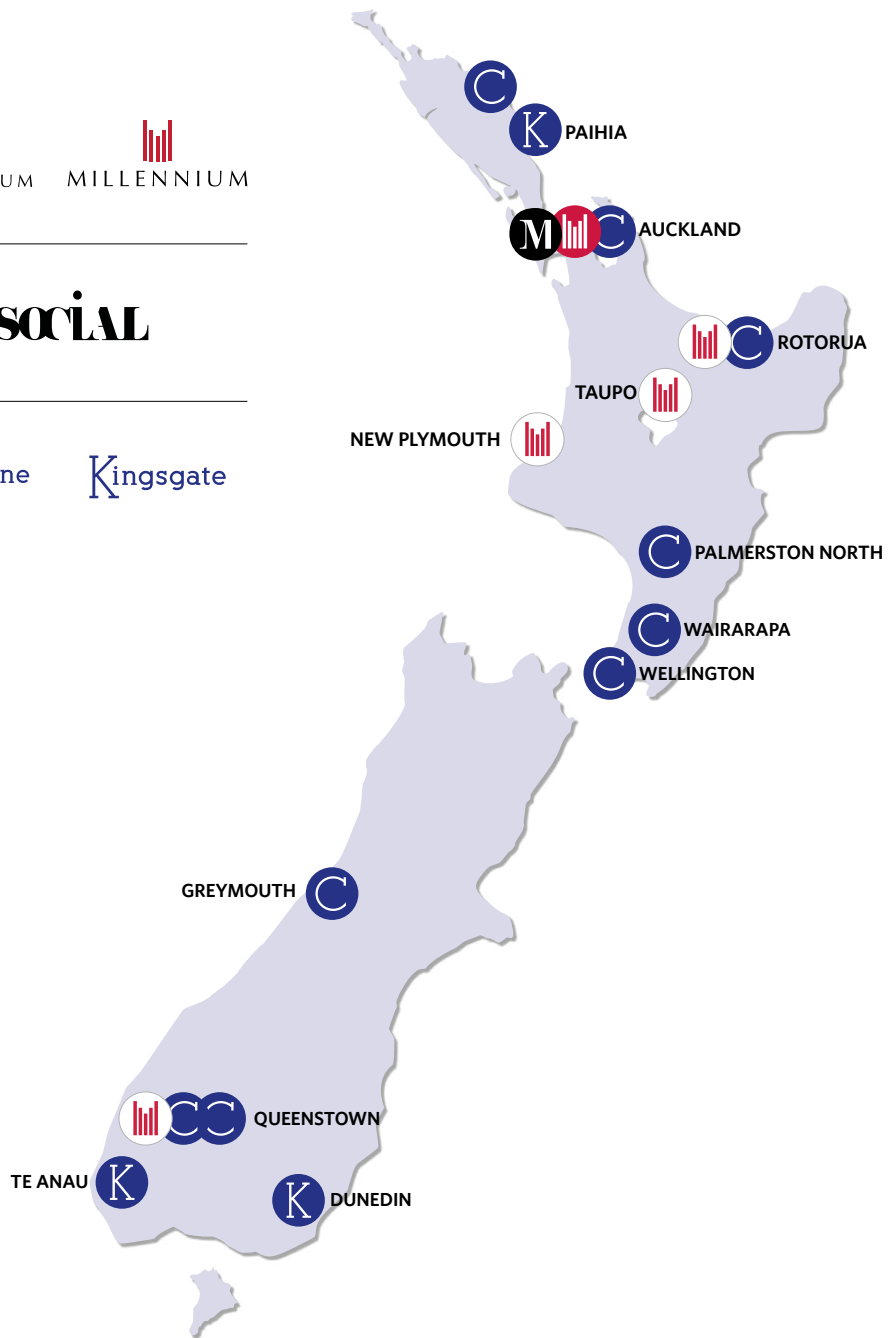
PREMIUM



LIFESTYLE



COMFORTABLE



0800 4 633 846

W meetingsnz.co.nz | millenniumhotels.co.nz

New Zealand +64 3 367 3302 | E meetings@millenniumhotels.co.nz